

## Wednesday, May 7, 2014

---

7:00 - 8:00AM

Registration/Continental Breakfast/ExpoZone Tables

7:40 - 8:00AM

Welcome and Introductory Remarks

### SESSION 1

8:00 - 8:40AM

35 Years of Wheel/Rail Management and Mismanagement: Hits, Misses and Opportunities

Mike Roney, Chairman—CPCS Transcom

### SESSION 2

8:45 - 9:25AM

Improving Tank Car Safety in Industrial Yards

Norm Hopper, Principal—Hooper Engineering

9:25 - 9:40AM - Refreshment Break to Info Zone



InfoZone 1: 9:40 - 10:05AM

InfoZone 2: 10:10 - 10:35AM

10:35 - 10:45AM - Expozone to Main Hall

### SESSION 3

10:45 - 11:25AM

Optimizing Amtrak's Wheel/Rail Interface

Eric E. Magel, M.A.Sc, P.Eng.—NRC Canada

### SESSION 4

11:30 - 12:10PM

AREMA / APTA Efforts to Develop Best Practices for Wheel/Rail Interaction for Passenger and Commuter Railroads

Joe Smak, President—AREMA

Martin Schroeder, Chief Technology Officer—APTA

12:10 - 1:20PM - Lunch (ExpoZone)

### SESSION 5

1:20 - 2:00PM

Validation of Rail Crack Measurement Devices on NS

Brad Kerchof, Director Research & Tests—  
Norfolk Southern Railway



InfoZone 3: 2:05 - 2:50PM

InfoZone 4: 2:35 - 3:00PM

3:00 - 3:15PM - Refreshment Break/ExpoZone to Main Hall

## PANEL DISCUSSION

### SESSION 6

3:15 - 5:15PM

Moderator: Gary P. Wolf, Wolf Railway Consulting  
Wheel/Rail Measurement Systems

#### Panelists:

Sean Woody—Norfolk Southern Railway

Ryan McWilliams—International Engineering

Matt Dick—Ensco

### ADJOURN

5:15PM

6:30 - 8:30PM—Grand Buffet Reception



Sponsored by  
Advanced Rail Management Corp.

## Thursday, May 8, 2014

---

7:00 - 7:50AM

Registration/Continental Breakfast/ExpoZone Tables

7:40 - 8:00AM

Welcome and Introductory Remarks

### SESSION 7

8:00 - 8:40AM

Freight cars and trucks: How they perform in curves - Australian experience, based on curve noise management

Dave Anderson, Acoustics Engineer/Director—Acoustics Studio Pty Ltd.

### SESSION 8

8:45 - 9:25AM

Performance Characteristics for Freight Car Bogies – What the Industry is Looking for to Improve Rail and Wheel Life

Jay Monaco, VP Global Engineering—Amsted Rail

9:25 - 9:40AM - To InfoZone



InfoZone 5: 9:40 - 10:05AM

InfoZone 6: 10:10 - 10:35AM

10:35 - 10:45AM - Expozone / to Main Hall

### SESSION 9

10:45 - 11:25AM

Asymmetrical wheel wear on heavy haul fleet operating in the desert; investigation and analysis

Rob Caldwell, Senior Engineer—NRC Canada

Tom Hewitt, Project Manager - Rolling Stock—  
CANARAIL Consultants, Inc.

### SESSION 10

11:30 - 12:10AM

Wear, Plastic Flow and Rolling Contact Fatigue Damage in Heavy Haul

Joseph Kalousek, Senior Consultant—ARM

12:10 - 1:20PM - Lunch in the ExpoZoneSession

### SESSION 11

1:20 - 2:00PM

Tools for Estimating Rail Wear & Replacement on CN

Kevin Day, Assistant Chief Engineer, Technology, Testing and Standards—Canadian National

### SESSION 12

2:05 - 2:45PM

ENew Materials for Top of Rail Friction Control in Heavy Haul Operation: Directions and Opportunities

Don Eadie, VP, Technology and Innovation—L.B. Foster

2:45 - 3:05PM - ExpoZone/Coffee Break

### SESSION 13

3:05 - 3:45PM

Wheel Rim Axial Residual Stress Development in Heavy Haul Service and the Relationship to Vertical Split Rim Wheel Failures

Cameron Lonsdale, VP Research &Development—  
Amsted Rail

### SESSION 14

3:50 - 4:30PM

Rail Condition, Rail Testing, and a Derailment

Brad Kerchof, Director Research & Tests—  
Norfolk Southern Railway

### CLOSING REMARKS

4:30 - 5:15PM

Closing Remarks/InfoZone Raffle

### ADJOURN

5:15PM

SPECIAL THANKS TO OUR 2014 SPONSOR

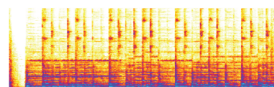


## INFOZONE PARTNERS

# LB Foster



**ATS Consulting**  
acoustics, transportation + strategy



acoustic studio



GE Transportation

# LINCOLN



# vossloh

## SEMINAR SPONSORS

PRESENTING SPONSOR



PLATINUM LEVEL SPONSORS

# LB Foster



# Amsted Rail



# Nordco

GOLD LEVEL SPONSORS



Holland

*RailAdvisor.com*  
THE RAILWAY INDUSTRY WEBSITE

The Journal of Wheel/Rail Interaction  
**interface**  
www.interfacejournal.com

## SAVE THIS AGENDA

### Seminar Sessions Download Instructions

Go to:

[www.wheel-rail-seminars.com/agendas](http://www.wheel-rail-seminars.com/agendas)

Click the links to download any or all sessions  
from the seminar.

Sessions will be posted by 5/31/14

Questions? Email [brandon@wheel-rail-seminars.com](mailto:brandon@wheel-rail-seminars.com)

**Continuing Education/  
Professional Development  
credits are available  
for this event.**

Request forms are available at the  
registration desk. The certificate will  
be emailed to you after completion  
of the course.

[www.wheel-rail-seminars.com](http://www.wheel-rail-seminars.com)

# WRI 2014 HEAVY HAUL SEMINAR AGENDA



MAY 7 - 8  
2014

PRESENTED BY